

Other countries that have participated in the Bethel Series

- Canada
- South Korea
- Australia
- Singapore
- South Africa
- Thailand
- Costa Rica
- Japan
- Germany
- New Zealand
- Taiwan
- Russia
- China
- Hungary



A GLOBAL MISSION

The Bethel Series Travels Around the World

The number of translations is growing. From Korea to Russia, from China to South Africa, from Ireland to Australia, from Costa Rica to Germany, the Bethel Series is expanding its international mission field and is now taught around the world—and in 47 different denominations.

"I am profoundly grateful that I enrolled in the Bethel Series some years ago. Gradually scripture became exciting and alive, and, best of all, relevant in my daily life. I understood in a deeper way what it meant to be a member in a Christ-centered community with my classmates as we studied together. Gifts that I never knew were mine began to emerge. I became one of the over 100,000 trained lay teachers of the Bethel Series."

— Testimonial

ENROLL TODAY!

Lifetime Warranty

Each congregation pays an enrollment fee—and that means your church owns the Bethel Series for a lifetime. If your pastor moves, the program stays with your congregation; and a new leader comes for training and continues the Bethel Series ministry.

Questions? Contact Us

By Mail: 312 Wisconsin Avenue, Madison, WI 53703
 Call Us: 608-579-5700
 E-mail Us: blest@bethelseries.org



To Learn More About The Bethel Series, Visit Our Website:
www.bethelseries.org



THE

Bethel Series

BLEST TO BE A BLESSING

A Powerful Program That Strengthens Your Church

The Bethel Series is a carefully planned adult Bible study program that offers a unique approach to the Scriptures. By an overview of the Old and New Testaments, people are led into a disciplined study in such a way that they grow in understanding of the meaning and mission of the Church in today's world.



Learn more at our website www.bethelseries.org

A Powerful Program That Strengthens Your Church Community



Your church enrolls in the program. Then the person chosen to be the instructor—minister or leader in charge of adult education—attends a training seminar to be introduced to the Bethel material and to learn how to implement the program.



The instructor selects key members from the congregation to be trained in the Intensive Teacher/Discipleship class.



The chosen students study with the instructor for two years.



Following two years of study, the teacher/discipleship graduates have gained a high level of biblical literacy and are prepared to serve in the leadership roles of the church including teaching the Bethel Series studies at the congregational level.



A church strengthened from within is better able to reach out to families and communities.

THE Bethel Series

The mission of the Bethel Series is to lead church members into a disciplined study of the Scriptures in such a way that they encounter the Living Christ.

Commitment to Excellence

From the very first printing and the very first training seminar, the Bethel Series has chosen to pursue excellence. That is why this program remains strong. That is why the Bethel Series continues to be the outstanding method of adult biblical study.

The Bible is the Textbook

The Bethel Series is a carefully planned program. It has a unique overview approach of the Old and New Testaments. The Bible is the textbook, and the Bethel Series is the tool that brings the student to total immersion in the Scriptures. The biblical knowledge establishes a firm foundation of faith.

The Language

The Bethel Series presents the biblical overview in a simple, easy-to-understand language; and therefore, the students need no previous theological training to benefit from the truths found in the Bible. The instructors are encouraged to insert the theology of their own denomination.

Long-Term Involvement

The Bethel Series becomes the adult education program for your church for years to come. By implementing this carefully structured long-range plan, the Bethel Series is designed to keep serving the future adult educational needs—year after year.

How to Begin

Your church enrolls in the program. Then, training is essential for success. The orientation seminar is designed for the minister, or for the leader in charge of adult education, or for lay people with previous Bethel Series training. At the seminar, the Bethel Series textbooks and materials are introduced, and the structure and implementation of the program are presented to ensure an ongoing ministry to achieve biblical literacy in your church.

Images as Teaching Tools: Lessons are paired with symbolic visuals to add meaning to the text.



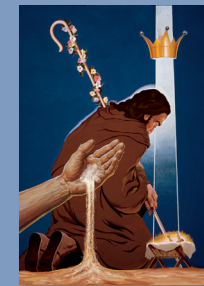
Creation and Its Concepts



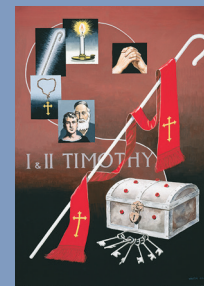
Pronouncement of a Destiny



The United Kingdom



Jesus the Man



1 and 2 Timothy



Sanctification

A PERSONAL MISSION

Your Commitment to Success

The Bethel Series is a two-tiered study. Following the training at the seminar, the instructor carefully selects the cadre of the best-qualified men and women to serve as the first teacher/discipleship trainees. These students are enrolled in a two-year disciplined study that is comparable to a college course. Because of the amount of time spent reading and studying the Scriptures, this part of the program graduates leaders who have had a life-changing experience.

Biblically Trained Leaders in Action

The rewards your congregation will receive are great. You now have biblically trained lay leaders that will fill a variety of roles in the church. Some will become the teachers of the Congregational Phase of the Bethel Series. This part of the program brings in the whole congregation; and in the process, you will discover people whose appetite for Scripture is whetted and will want more—and that begins the framework for another intensive teacher/discipleship training class. The Bethel Series becomes an ongoing adult education program for your church.

THE CHURCH'S MISSION

Meeting the Christ of the Scriptures

Your church will be strengthened at the core. A biblically literate congregation will produce strong leadership in all church activities. We have testimonies that describe the increase in attendance at worship services. Several sources have shared that they see a new commitment in the stewardship of all gifts. You will find a new world of discipleship as a result of meeting the true Christ that is found by immersing people in the Scriptures.

